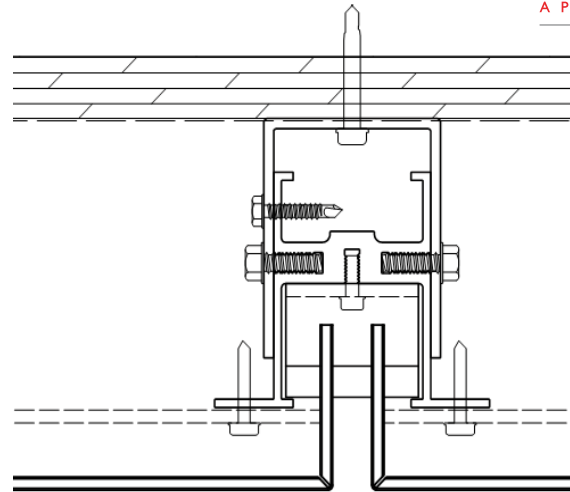
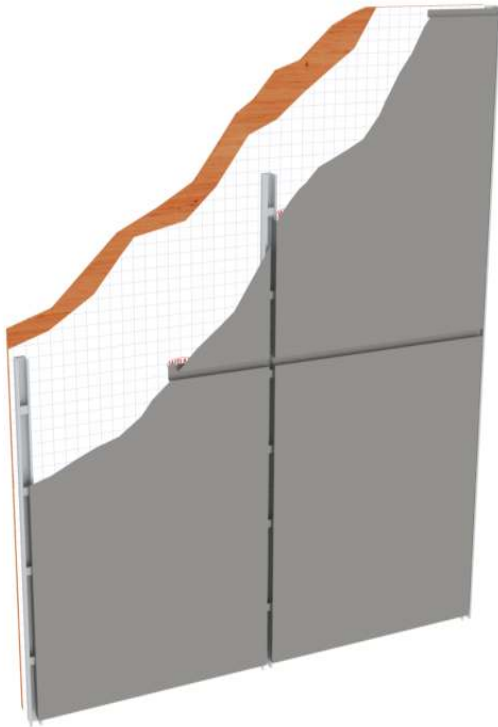


SERIES 70 PRESSURE EQUALIZED HOOK & PIN RAINSCREEN



**METAL
DESIGN
SYSTEMS**

DESIGNED FOR
A PERFECT FIT.



THE SERIES 70 is a hook and pin style system with no caulk or silicone and virtually maintenance free. This panel system features a continuous vertical channel with adjustable panel support pins. The panel returns are notched to hook over the support pins. This completed system is very clean and attractive.

SERIES 70 System Features

System	Pressure Equalized Rainscreen
Joint Type/Size	Open Joint - No Caulk
Progressive System	Non-sequential
Weather Barrier	Self Adhered or Fluid Applied
Sheathing Over Studs	3/4" Plywood Preferred
Curved Surfaces	Moderate-Difficult
Independently Tested	ASTM E283, E331, E330, E1233, & AAMA 501, 508 & NFPA 285
Maintenance Free	Yes
Price	Moderate
Weather Sealed System	Passed AAMA 508-07
Ease of Installation	Advanced

SERIES 70 PRESSURE EQUALIZED HOOK & PIN RAINSCREEN

Face Material:

- Alpolic
- Alucobond
- Reynobond
- Larson
- Aluminum Sheet
- Stainless Steel Sheet
- A606 Weathering Steel

Thickness:

- 3MM (.118") Special Order MCM
- 4MM (.157") Standard MCM
- 6MM (.236") Special Order MCM
- .080 - .125" Aluminum Sheet
- 20GA - 14GA Stainless Sheet

System Depth:

4" minimum, adjustable

Performance Testing:

- ASTM E 283 - Static Air Infiltration
- ASTM E 331 - Static Water Infiltration
- ASTM E 330 - Structural Design Loads (± 70 psf)
- ASTM E 1233 - Cyclic Air Pressure
- AAMA 501 - Dynamic Water Infiltration
- AAMA 508 - Pressure Equalized Rainscreen
- NFPA 285

Recommended MCM Panel Module Sizes:

ACM - Any Combination of Width & Length

Width	Length
58"	192"
46"	142"
26"	94"
20"	68"
16"	61"

Aluminum Stainless Sheet - Please call

System Extrusions:

Aluminum Alloy: 6063-T6

Fabricated Panel Tolerance:

Width: 0.08"

Length: 0.08"

Pan Depth: 0.04"

Square: 0.2"

Bow: Max. 0.57% of length and/or width

Maximum Panel Size:

58" x 192"

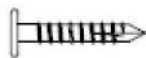
Joint Width:

1/2" Standard

Note: Certain combinations of material, thickness, sizes and/or colors may not be available or be different than what is represented here.

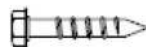
SERIES 70 Recommended Fasteners

300 Series SS
T-17 12-11 x 1-1/4"
Pancake Head



For attaching extrusions to wood substrate when a low profile head is required. 1" penetration into wood required.

300 Series SS
#12 Wood Screw
Hex Washer Head



For attaching extrusions or attachment clips to wood surfaces. Must be long enough to penetrate 1" into wood.

Bi Metal #12 Self Drilling
With Corrosion
Resistant Coating



For attaching extrusions to aluminum or steel surfaces. Must be long enough to penetrate with at least 3 threads visible from back side of attachment.

Stainless Steel
1/4" Tapcon



Use for attachment of clips and extrusion to masonry surfaces. Minimum 2" from any edge to avoid structural spalling.



4150 C Street SW | Cedar Rapids, IA | 52404

319-362-7454 | Toll Free 866-442-6803 | Fax 319-362-7456